



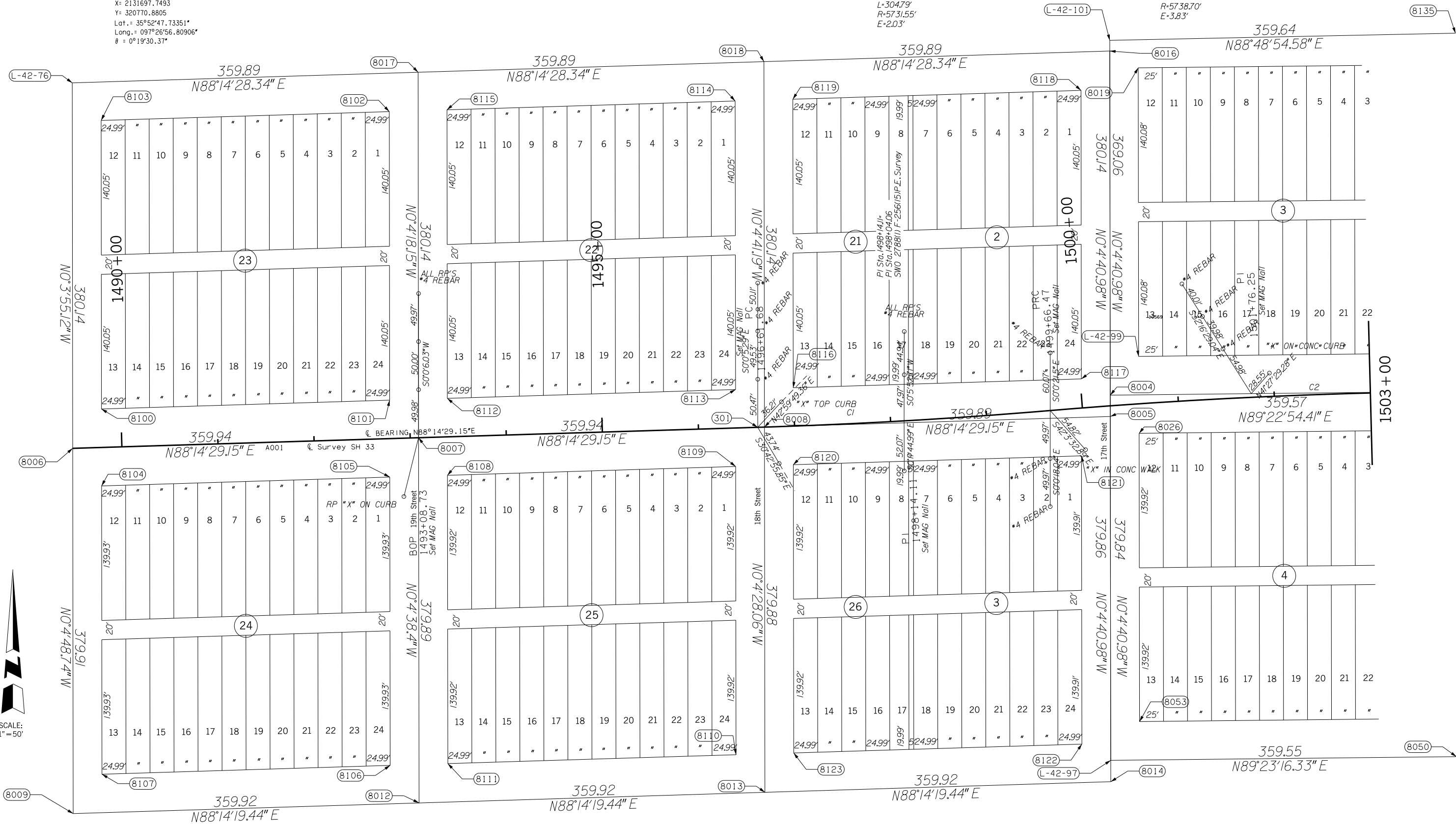
Angle of Variance
At BOP Sta.
X= 2131697.7493
Y= 320770.8805
Lat.= 35°52'47.73351"
Long.= 097°26'56.80906"
θ = 0°19'30.37"

SECTION 7
T-16-N, R-2-W

CURVE DATA C1
P.I. Sta. 1498+14.11
X= 2132202.8941
Y= 320789.3897
Δ= 3°02'48.61" Lt.
D= 0°59'58.76"
T= 152.43'
L= 304.79'
R= 5731.55'
E= 2.03'

CURVE DATA C2
P.I. Sta. 1501+76.25
X= 2132563.8369
Y= 320816.7332
Δ= 4°11'13.87" Rt.
D= 0°59'54.28"
T= 209.79'
L= 419.39'
R= 5738.70'
E= 3.83'

OKLAHOMA DEPARTMENT OF TRANSPORTATION					
FED. ROAD DIST. NO.	STATE	PROJ. NO.	FISCAL YEAR	SHEET NO.	TOTAL SHEETS
	OKLA.				
DESCRIPTION		REVISIONS		DATE	



SCALE:
1" = 50'

OKLAHOMA DEPARTMENT OF TRANSPORTATION					
SURVEY DIVISION					
PLS	GSR				
DRAWN	JMW				
CHECKED	GSR				
APPROVED					
CREW	EL RENO	SWO 4432 (1)	PROJECT NO. 21860(04)	SHEET NO. 5010	